

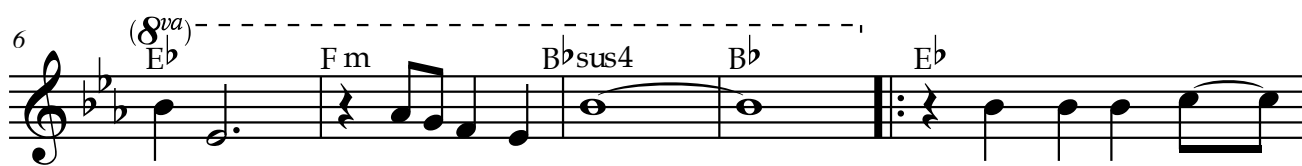
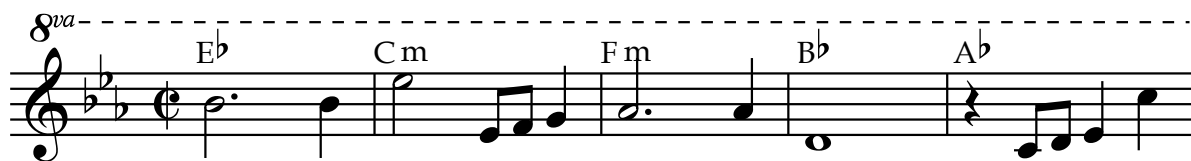
You Were Always There

Words and Music by
DON GNECCO



You Were Always There

Words and Music by
DON GNECCO



1. From a - top the ___
2. A - top-the high - est



mount - ain we see our world be - low.
mount - ain in ___ a place we know



Life un - folds be - fore us, gen - tle breez - es blow.
Warmth from love and wis - dom touch - es all be - low.



Look - ing up to the sky where the ea - gles soar,
Look - ing up to the sky where the ea - gles soar,

2

22 F m Bb7 1. Eb Cm

I feel things I've nev er felt be - fore.
 I feel things I've nev er felt be - - - - -

26 F m Bbsus4 Bb 2. Eb Eb7

fore. _____

31 Ab Eb G Cm

From the high - est place now it's all so clear.

35 Ab Eb Cm Fm 1. Bb

You were there sup - port - ting me, You Were Al-ways There.

39 2. Bbsus4 C7 Bb F

There, al-ways there. From the high - est place

3

43 A Dm B \flat F Dm

now it's all so clear. You were there sup - port - ting me,

47 Gm C7 Dm *Rit.* Gm

You Were Al-ways, You Were Al-ways There. You Were Al-ways

51 C7 F Dm C7 F sus4 F

You Were Al-ways There.